



NEWSLETTER

Term 4 2024

Phone: 02 6496 1918 Email: admin@playability.com.au

Post: PO BOX 501, Eden, NSW, 2551

Website: www.playability.com.au NDIS ID [4050003241](#)

Welcome to Term 4, 2024

I have been with PlayAbility for 13 years, but my journey began 7 years earlier.

Twenty years ago, our family began seeking support for our daughter, who was born with a disability. At the time, local resources were scarce. Beyond our contact with Community Health, there was little available. Private therapists were fully booked, and Imlay Special Needs Group (which later became PlayAbility) offered minimal support.

In 2007, under a new manager, PlayAbility introduced us to early intervention. Marcelle, a teacher, was the first to truly understand what we, as parents, were going through. She gave us a positive vision of our daughter's potential and her future.

For the next four years, we attended weekly sessions with Marcelle. She effortlessly engaged our daughter's strengths and addressed her challenges through play. Every session celebrated small milestones, laying the foundation for her transition to school.

With Marcelle's support, we became actively involved in our daughter's development. We learned strategies and used the resources she provided at home. When speech pathologists and occupational therapists later joined, our increased confidence made their contributions even more effective, both at home and in school.

Today, at 21 years of age, our daughter enjoys a great deal of independence and has a life filled with meaningful friendships.

I've shared this brief story to explain why I am still so passionate about this approach to working with children and supporting parents. The Keyworker model, typically delivered by community-based organisations, aligns with our values of inclusion and other evidence-based social models.

It is an aspirational approach that recognizes each child's unique personality, helping them shine despite their challenges. It values the family context, emphasizes building the capacity of caregivers, and fosters collaboration. Most importantly—it works.

Warm regards,

Geoff Johnston
CEO



We wish to acknowledge the Traditional Owners of the land and waters of the Bega Valley and pay our respects to Elders past, present and future.

GRATITUDE PROMPTS



1. A **strength**  of mine for which I am grateful is...
2. Something **money can't buy**  that I'm grateful for is...
3. Something that **comforts me**  that I'm grateful for is...
4. Something that's **funny** for which I'm grateful for is...
5. Something **in nature**  that I'm grateful for is...
6. **A memory**  I'm grateful for is....
7. Something that **changes**  that I'm grateful for is....
8. A **challenge**  I'm grateful for is....
9. Something **interesting**  that I'm grateful for is...
10. Something **beautiful**  I'm grateful for is...

Our Services

- ◆ Early Intervention and Therapy Supports for children aged 0-young adult with an NDIS plan.
- ◆ Advice and referral service for families with questions or concerns about their child's development.
 - ◆ Supported playgroups for families with children aged 0-school aged in the Bega Valley.
- ◆ Indigenous family support and supported play sessions, service/support linking and transport assistance.
 - ◆ Mobile Toy and Parenting Resource Service.
 - ◆ NDIS Plan Management.



DONATE NOW!

LET'S CREATE A BRIGHTER FUTURE!

GIVE A LITTLE, HELP A LOT

PlayAbility can now accept donations through our website!

Your donation will go straight into improving services for children and families in the Bega Valley

DONATIONS OVER \$2 ARE TAX DEDUCTIBLE



VISIT OUR WEBSITE
www.playability.com.au

CONTACT US
02 64961918



At PlayAbility we are dedicated to make sure all children, and their families have equal access to social and disability supports without discrimination, irrespective of race, language, religion, ethnic origin, ability or other status. Your generous donation can make a significant impact.

If you would like to donate or find our more please scan the QR code or click the link to our website:

[PlayAbility Inc | Registered NDIS provider](#)



Early Intervention and Therapy Supports

Our Team

Suzie Eruera - Early Childhood Support Manager / Specialist Teacher

Pauline Mendes - Therapy Support Manager / Speech Pathologist

Karin Champagne—Specialist Teacher

Lucy Gollan—Specialist Teacher

Sue Hill—Specialist Teacher

Holly Sutor-Fogarty—Specialist Teacher

Catherine Brown—Specialist Teacher

Brooke Russell—Development Specialist
(On Maternity leave)

Phil Power—Early Childhood Specialist

Hannah Lenthall— Allied Health Assistant
(On leave)

Valerie Schmid-Oke—Play Therapist

Kate Willis—Occupational Therapist

Feedback

PlayAbility welcomes and values your feedback. It is a vital component of our monitoring and review process and enables our service to evolve and improve.

If you are unhappy with any part of your service, you have the right to make a complaint. Talk to your key worker, email, text or write a letter to us or complete a feedback form and place it in the feedback box at either our Bega or Eden centres.

Feedback can be anonymous and you are welcome to have an advocate during any part of the process. Please ask any staff member for a copy of the Feedback and Complaints policy or you can find it on our website.

Scan the QR to complete a Feedback, Complaints and Compliments Form Online.





Play Therapy

Play Therapy is an effective child centred technique used in child counselling or psychotherapy to assist children with their emotional development behavioural challenges and making sense of their lived experiences of trauma. Play Therapy meets the child at their level of communication, instead of asking to use adult communication that is still unfamiliar. Abundant research supports its effectiveness to treat a whole host of child emotional and behavioural issues.



JOIN OUR COMMITTEE AND MAKE A DIFFERENCE

As a community-based organisation, PlayAbility is overseen by a volunteer management committee. This committee plays a vital role in overseeing our purpose in the community. We are currently seeking new members to increase the numbers and diversity of people representing the community. If you have skills in governance, fund raising, business management or simply want to play a role in guiding this wonderful organisation please get in touch.



WE ARE



hiring!

Early Childhood Teacher

Join
our team!

About You:

- Qualifications: Degree in Early Childhood Education/Teaching.
- Experience: Minimum of 3 years working within early childhood education and care settings.
- Skills: Demonstrated skills in time management, organisation, reporting, and setting priorities.
- Understanding: Experience and understanding of the needs of children with developmental delays or disabilities and their families.

Apply Now!

To apply, please send your resume and a cover letter detailing your experience and qualifications to admin@playability.com.au. For more information about the role, visit our website www.playability.com.au or contact Geoff Johnson on 0437 961 918.

When you join us here at PlayAbility, it's like you join our family. We use a collaborative approach. It's a Key Worker Model that gives you access to a range of specialists. Therapy is delivered in a individual way through one qualified professional called your Key Worker.

And we are happy when you are happy.
Thank you to Nat for this review..

"I love that you care deeply. But I care deeply about PlayAbility and actually find them one of the most ethical providers I've ever worked with."

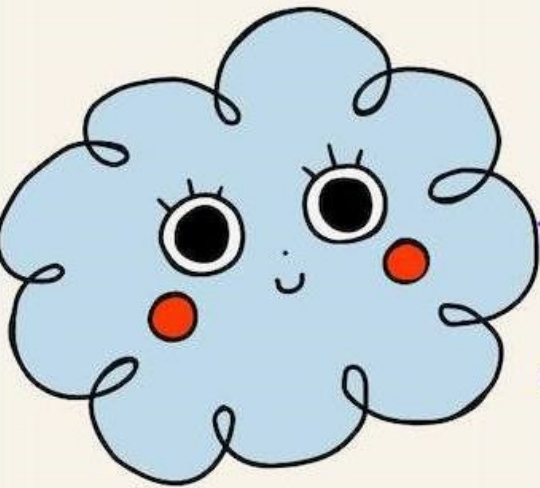
Nat- Kalaru



We Have an Occupational Therapist

We now have an Occupational Therapist! Sessions will be billed through your child's NDIS Plan. We only have them for a short amount of time so if you are interested please contact us:

admin@playability.com.au or 02 6496 1918

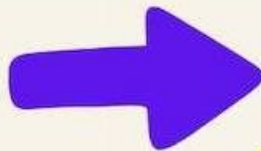


Occupational therapists help children to take part in everyday activities, movement and learning. This includes activities like climbing and walking, drawing and writing, getting dressed and helping around the home. Occupational therapists also help children to play with others.

BOOK NOW!!

-WSLHD

FROM THE
26TH OF
AUGUST



TILL THE
15TH OF
NOVEMBER



 @PlayAbility Bega Valley, NSW
 @playability.inc
www.playability.com.au
02 6496 1918
admin@playability.com.au

OUR MEETING PLACES



GROUP ACTIVITIES TERM 4 2024



EARLY CHILDHOOD DEVELOPMENT GROUP

Where: Bega

When: Every Monday

Time: 9:30am - 11:30am

Expression of Interest

RSVP to Holly

0427 993 650



OUR MEETING PLACES



GROUP ACTIVITIES TERM 4 2024



CRAFT GROUP

This past term we made lots of fun art including 3D postcards for the Spiral gallery competition, circular weaving bowls, a tiger coaster and a flag banner. Well done to all the children.

Where: Bega

When: Monday

Time: 3:30pm - 5:00pm

Expression of Interest

Phil 0438 453 480



OUR MEETING PLACES



GROUP ACTIVITIES TERM 4 2024



OUR MEETING PLACES



GROUP ACTIVITIES TERM 4 2024



TENNIS GROUP

Where: Eden Tennis Club Aslings Beach Rd, Eden

When: Mondays from the 21st of October

Time: 4:15pm - 5:15pm

Expression of Interest

Any 6 + year olds interested in joining in the fun please contact Catherine 0419 126 482 or Shae 0427 498 457.



COOKING GROUP

This past term we have enjoyed yummy smoothies and made choc chip biscuits, sushi, tuna bake, spaghetti carbonara and pumpkin soup. The children have really enjoyed cooking a variety of different meals each week.

Where: Bega

When: Wednesday

Time: 3:30pm - 5:00pm

Expression of Interest

Phil 0438 453 480



OUR MEETING PLACES

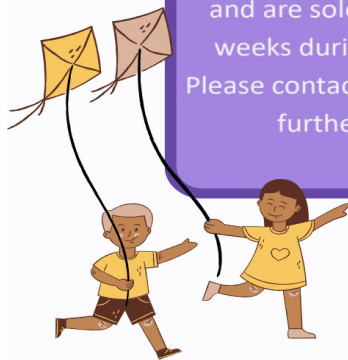


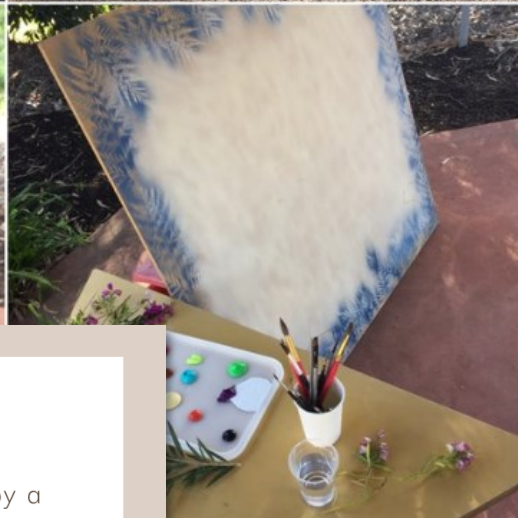
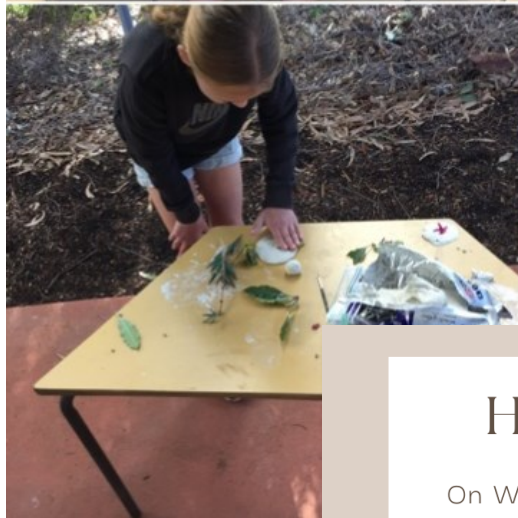
GROUP ACTIVITIES TERM 4 2024



PRICE

PlayAbility group activities are charged to your child's NDIS Plan and are sold as a package of 10 weeks during the school term. Please contact us on 6496 1918 for further information.





Holiday Mural Painting

On Wednesday the 10 July, we were joined by a number of families at the Eden Playability Centre for a group mural painting activity, as part of our school holiday program. Children enjoyed exploring a range of mediums such as clay prints, made using natural elements from our surrounding bushland, acrylic paints on canvas and onto the provided mural board. As well as crayons and texters. All of the components were added to the mural, making a stunning multi medium artwork. Families and children enjoyed this hands-on activity, inspired by our surrounding natural beauty. The activity was followed by morning tea in the glorious morning sun.



Welcome to PlayAbility Family Support



Who we are:

PlayAbility Family Support is an all-inclusive service. Our aim is to **empower** children and their families to set and **achieve** real and measurable goals in **education, development, wellbeing, social, emotional** and **health**. These family-centred goals are achieved through strength-based programs focused on creating a world where children feel connected to their **identity, community** and **culture**.

What we do:

- Mobile Toy and Parenting Resource Service
- School transition programs and school collaboration
- Navigating the NDIS and access
- Supported Playgroups (Outdoor reconnect play session)
- Supported Community groups
- Referrals to other services
- Internal referrals to Early Intervention Specialists
- Paperwork and support letters for housing, Centrelink, care and education.
- Home visits
- Connecting families to parenting groups
- Transport assistance
- Attending appointments (Dr, Dentist, EYAT, CIFTs, EACH)
- Development and implementing collaborative Family Planning



For more information please call our office on 6496 1918

Don't forget to check our website. You can access all our timetables or send us a message from your computer,



Referrals

For service providers, NDIS plan managers/ coordinators please use the referral form on our website.

[Referrals to PlayAbility Inc](#)

We can also link you up with our family support team. Please see above for details about their services or ring our office on 6496 1918.



Welcome to PlayAbility Family Support



PLAYABILITY SUPPORTED



MONDAYS

PLAYABILITY CENTRE IN
EDEN
3 CROWN LN, EDEN

TUESDAYS

APEX PARK IN COBARGO
ALONG COBARGO
BERMAGUI RD

WEDNESDAYS

PLAYABILITY COTTAGE
IN BEGA
35 PARKER ST, BEGA



Contact Us
02 6496 1918



Email Us
admin@playability.com.au

PLAYGROUPS TERM 4

From Monday the 21st
of October till
Wednesday the 18th of
Decemeber



From
10:00am - 11:30am





MOBLIE TOY LIBRARY AND PARENTING RESOURCE SERVICE

DISCOVER OUR WIDE RANGE OF TOYS FOR ALL AGES.
 IF YOU SEE US OUT AND ABOUT, POP OVER FOR A CHAT.
 FOR MORE INFORMATION, CALL US 6496 1918



MONDAY	TUESDAY	WEDNESDAY
September 30th Toy Truck & Pop-Up Playgroup Cocora Beach EDEN 10:30 – 11:30am	October 1st Toy Truck & Pop-Up Playgroup John Gordon Memorial Park CANDELO 10:30 – 11:30am	October 2nd Toy Truck & Pop-Up Playgroup Bega Park BEGA 10:30 – 11:30am
October 14th Toy Truck & Pop-Up Playgroup Spencer Park MERIMBULA 10 - 12pm	October 15th Toy Truck & Pop-Up Playgroup, EDEN Endeavour Park, Banks Street 10 – 12pm	
October 21st EDEN Playability Centre, 3 Crown Lane 10:30 – 11:30am	October 22nd John Gordon Memorial Park CANDELO 10:30 – 11 :30am	October 23rd Apex Park BERMAGUI 10 – 11 am
November 11th TOWAMBA Playgroup Nungutta Street 10:30 – 11:30am	November 12th BEGA Sapphire Neighbourhood Service Playgroup 10:30 – 11:30am	November 13th ROCKY HALL Preschool 9 – 10am
 FREE SERVICE	November 19th Toy Truck & Pop-Up Playgroup KIAH HALL 10:30 – 12pm	November 20th TATHRA Playgroup 10:30 – 11:30am
November 25th <u>RETURNS ONLY</u> EDEN Playability Playgroup 3 Crown Lane 10:30 – 11:30am	November 26th <u>RETURNS ONLY</u> Toy Truck & Pop- Up Playgroup EDEN Endeavour Park, Banks Street 10 – 12pm	November 27th <u>RETURNS ONLY</u> BEGA Playability Playgroup Parker Street 10:15 – 11:15am
December 2nd <u>RETURNS ONLY</u> Toy Truck & Pop- Up Playgroup Spencer Park MERIMBULA 10 - 12pm	December 3rd <u>RETURNS ONLY</u> John Gordon Memorial Park CANDELO 10:30 – 11 :30am	December 4th <u>RETURNS ONLY</u> Apex Park BERMAGUI 10 – 11 am
December 9th <u>RETURNS ONLY</u> TOWAMBA Playgroup Nungutta Street 10:30 – 11:30am	December 10th <u>RETURNS ONLY</u> BEGA Sapphire Neighbourhood Service Playgroup 10:30 – 11:30am	December 11th <u>RETURNS ONLY</u> ROCKY HALL Preschool 9 – 10am
	December 17th <u>RETURNS ONLY</u> Toy Truck & Pop- Up Playgroup KIAH Hall 10:30 – 12pm	December 18th <u>RETURNS ONLY</u> TATHRA Playgroup 10:30 – 11:30am